

BRUNTON

RESIDENTIAL



BENFIELD CLOSE, CONSETT

£995 Per Month

BRUNTON

RESIDENTIAL





BRUNTON

RESIDENTIAL



BRUNTON

RESIDENTIAL



360 VIRTUAL TOUR - SEMI-DETACHED - £995PCM - AVAILABLE 01/08/2025 - 3
BEDROOMS

Brunton Residential are delighted to offer this three-bedroom semi-detached house located on Benfield Close in Consett. The property is provided on an unfurnished basis, but does include a fridge freezer, integrated washing machine and dishwasher.

BRUNTON

RESIDENTIAL



BRUNTON

RESIDENTIAL



BRUNTON

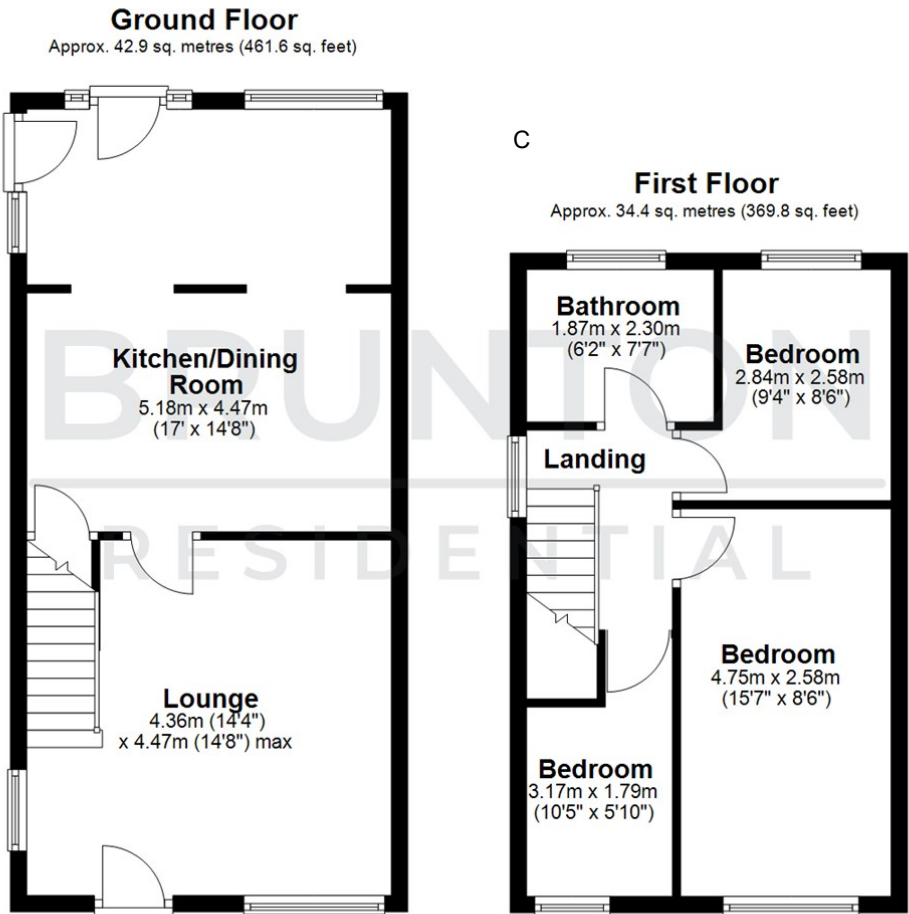
RESIDENTIAL

TENURE :

LOCAL AUTHORITY : Durham

COUNCIL TAX BAND : C

EPC RATING : C



All measurements are approximate and are for illustration only.
Plan produced using PlanUp.



Energy Efficiency Rating		
	Current	Potential
Very energy efficient - lower running costs		
(92 plus) A		85
(81-91) B		
(69-80) C	71	
(55-68) D		
(39-54) E		
(21-38) F		
(1-20) G		
Not energy efficient - higher running costs		
England & Wales	EU Directive 2002/91/EC	

Environmental Impact (CO ₂) Rating		
	Current	Potential
Very environmentally friendly - lower CO ₂ emissions		
(92 plus) A		
(81-91) B		
(69-80) C		
(55-68) D		
(39-54) E		
(21-38) F		
(1-20) G		
Not environmentally friendly - higher CO ₂ emissions		
England & Wales	EU Directive 2002/91/EC	